

Floating Storage & Regasification Terminal



Full-scale, multi-purpose LNG receiving terminal.

Key Features

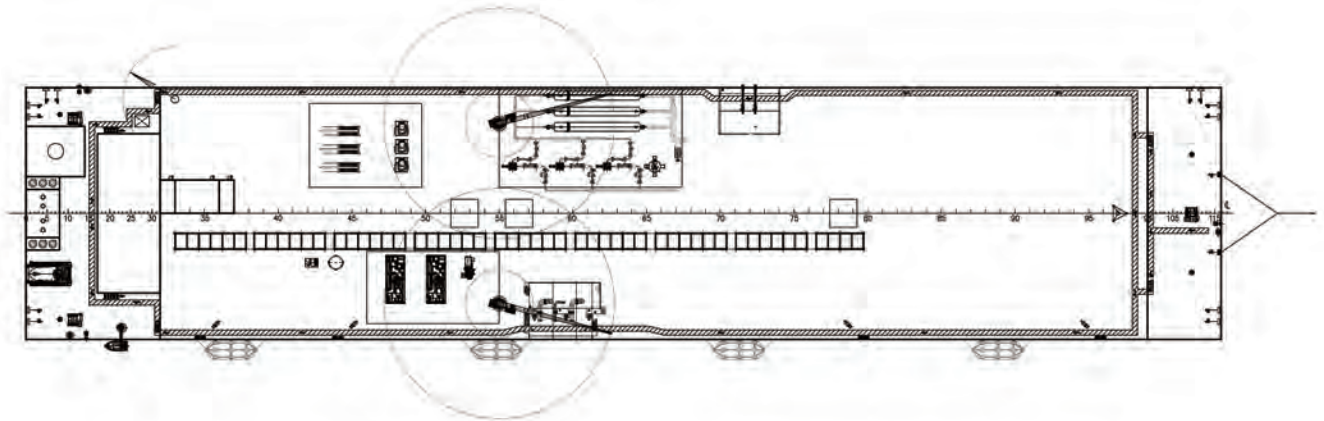
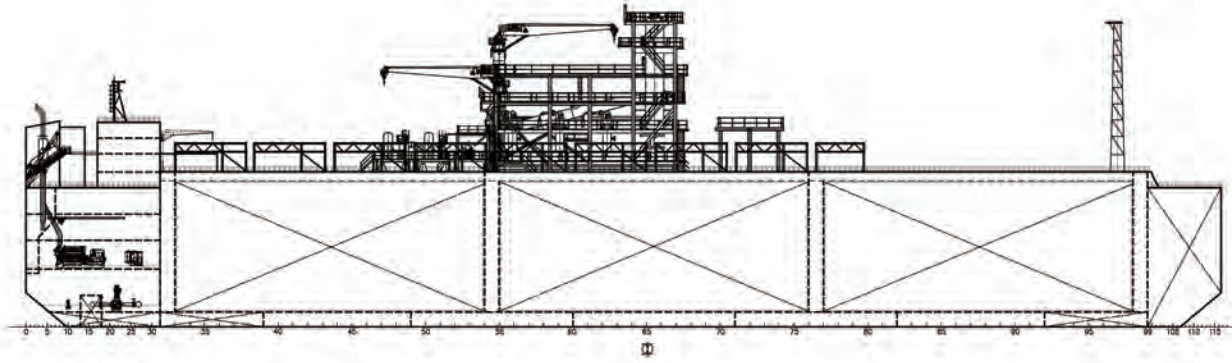
- 20% lower CAPEX than LNG-RV
- Nearshore and offshore deployment
- Regasification capacity up to 1,500MMSCFD
- 20 years continuous operation without dry docking
- Storage 150,000 – 265,000m³

Functionality

- Regional LNG hub
- Gas to shore
- Bunkering terminal
- LNG to shore
- Off-grid power



Approval in Principal
Ref:OFF/17/AIP/007 Rev.0



Main Dimensions

- Length overall 228.00m
- Breadth 48.00m
- Depth at side 29.50m
- Design draught 10.50m

Performance

- Regasification rate 300 to 1,500MMSCFD
- Send out pressure 50 to 105bar

Capacities

- LNG 170,000m³
- MDO ~700m³
- Ballast water 33,000m³

Cargo Transfer

- Loading rate 10,000m³/h

Machinery

- Generators 4 x 4,400 kW - dual fuel (IMO tier III in gas mode)
- Emergency generator 1 x ~900 kW - diesel

Cargo Equipment

- Cargo pumps 2 x 500m³/h per tank
- BOG handling equipment BOG compressor & heater
- Manifolds 4 x 16" liquid + 1 x 16" vapor return
- LNG transfer system Cryogenic flexible hoses with ERS
- NG transfer manifold 1 x 12" with flexible hose

Accommodation

- Complement 26 persons

Classification

- Bureau Veritas
I,XHULL, XMACH, OFFSHORE SERVICE BARGE, RV, LIQUEFIED GAS STORAGE, SLOSHING, TRANSIT-COASTAL AREA, AUTO, LSA, CPS(WBT), XVERISTAR-HULL DFL30, GREEN PASSPORT, LIQUEFIED GAS OFFLOADING, INWATERSURVEY, XALM, XOHS